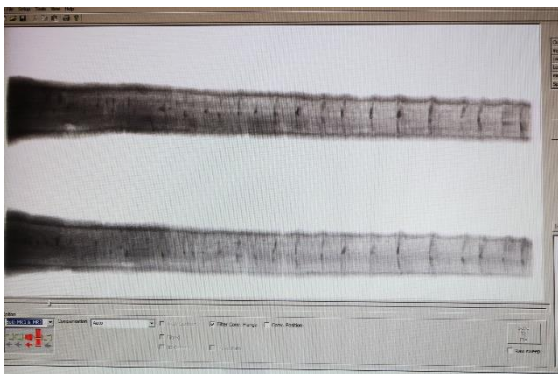


## MRR – More Right Raw Material



*The Different felling areas results with logs that have different quality grades. With MRR we are trying to find the key difference to where we can find what type of qualities together with Sveaskog.*

The MRR-project is a cooperation between Sveaskog, Stenvalls Trä, Remasawco and RI. The goal of the project is to be able to know before felling where which qualities can be found and what we can expect from our raw material flow throughout the year.



*With the help of x-ray and BoardScanner we can connect the end product with which log it originally and the log itself is connected to a specific felling area.*

*Can we specify which logs that can be turned into specific products already in the forest?*





*Our TMF-driver keeps our test logs separated from the rest so that we can easily keep track on the logs origin.*

We have already been able to prove that the distribution of logs has a wide change in quality from different fellings. During the month of June we have taken data recordings from three different fellings to gain more information. The measurements collected are from the x-ray and 3D-scanner, such as bonitet, height above sea level and growth area from Sveaskog. With the help of our AIS-system we keep track on all these measurements and connects the data from sorting and production to the final product.



The forests selected for these tests are places that already has been planned to be used in Stenvalls Träs production. The timber are from areas between Älvsbyn and Kåbdalis and grows on thin wooded grounds. The age varies between the forests, one had reached an age of 130 years whilst the others where between 90 and 110 years old, which is a normal age for final felling. These forests represents the midland forests around Stenvalls Trä in an accurate way. During the autumn it would be interesting to record data from more woodlands around Stenvalls Trä and gain more information for the project.